



225 CROSSING

LOGISTICS CENTER

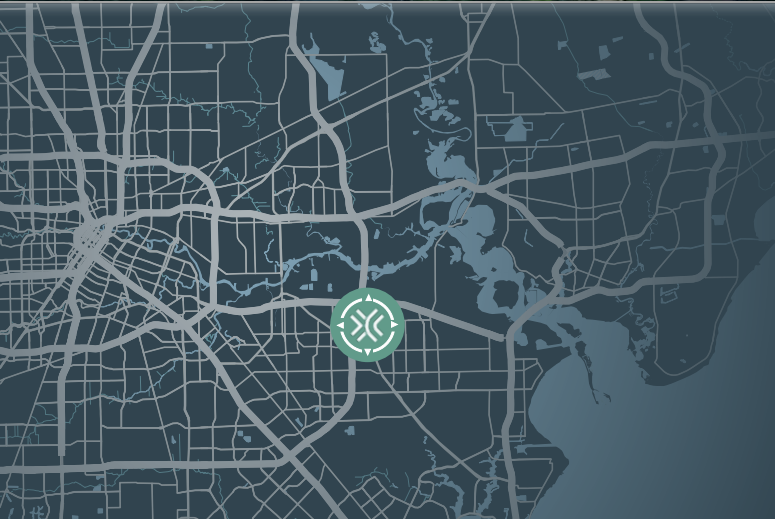
310 BELTWAY GREEN BLVD | PASADENA, TX

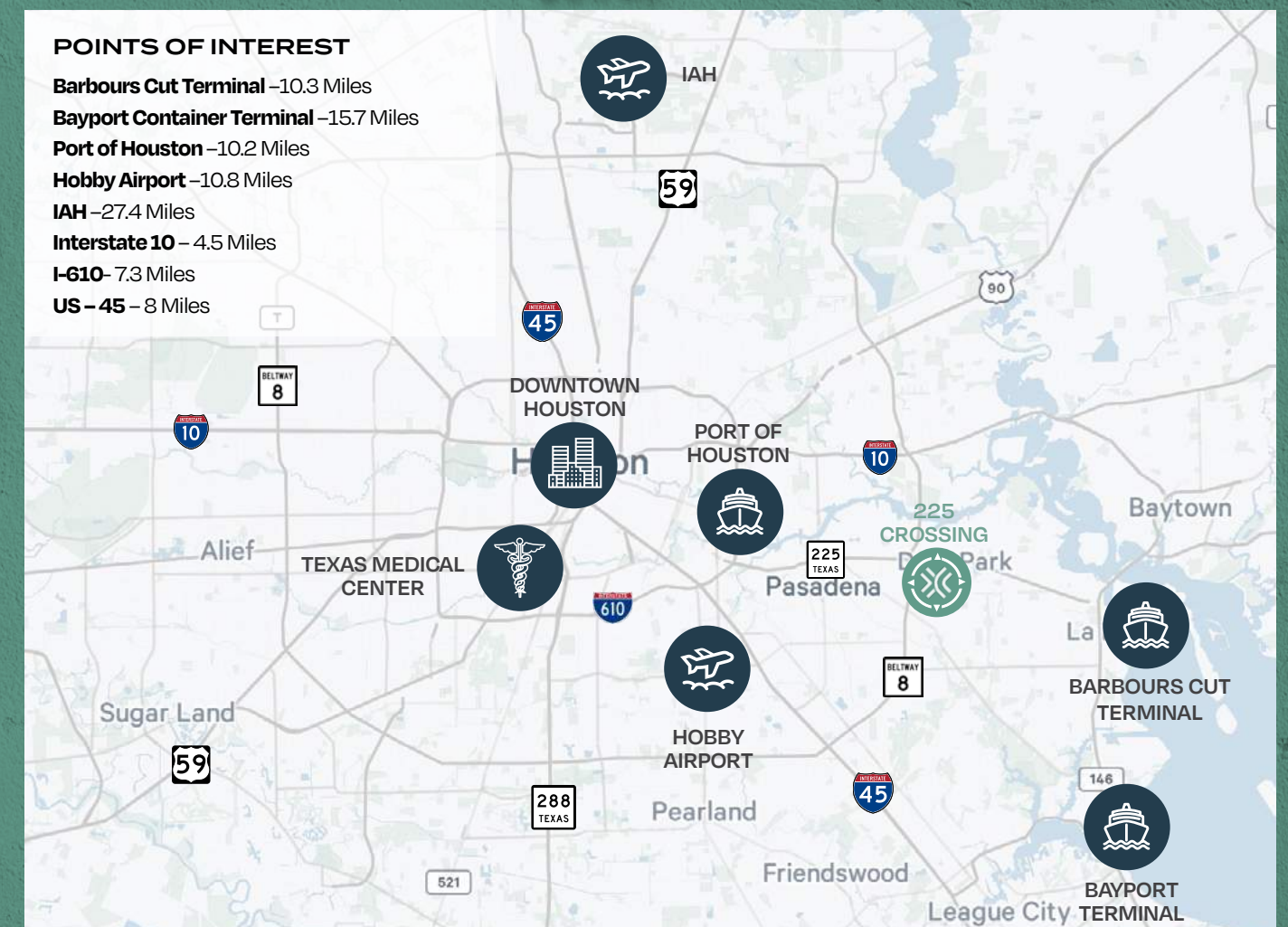
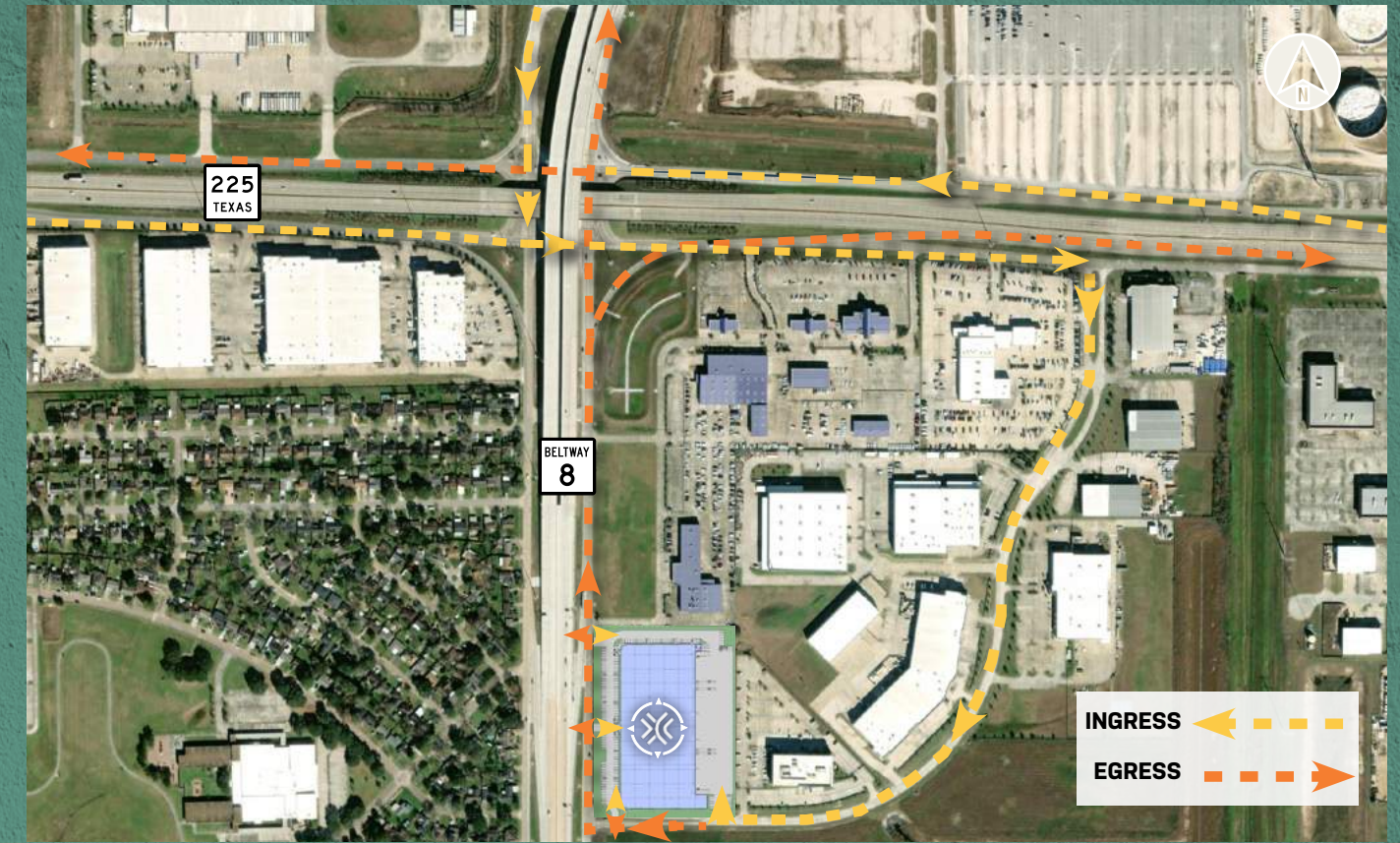
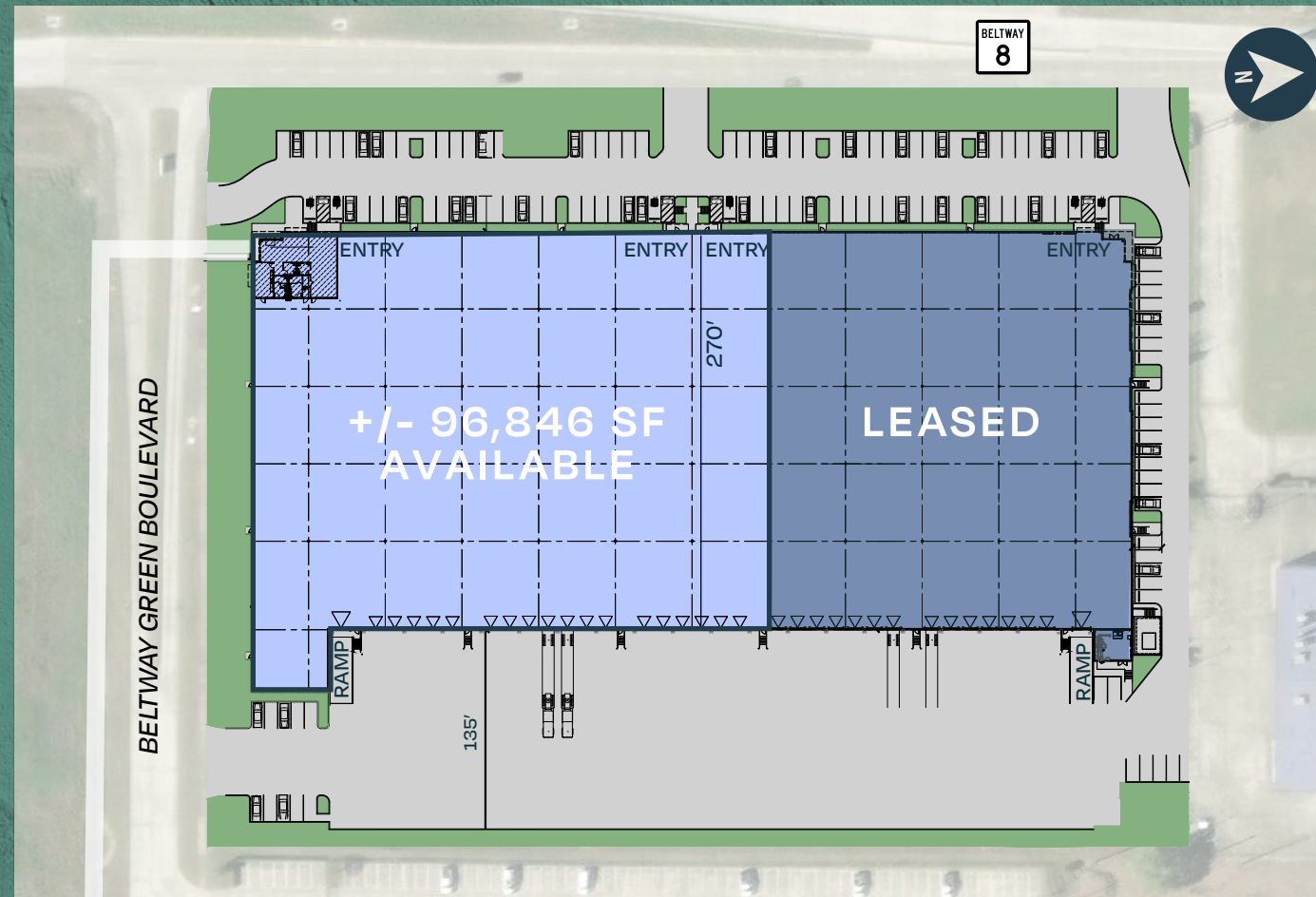


DELIVERED 2024

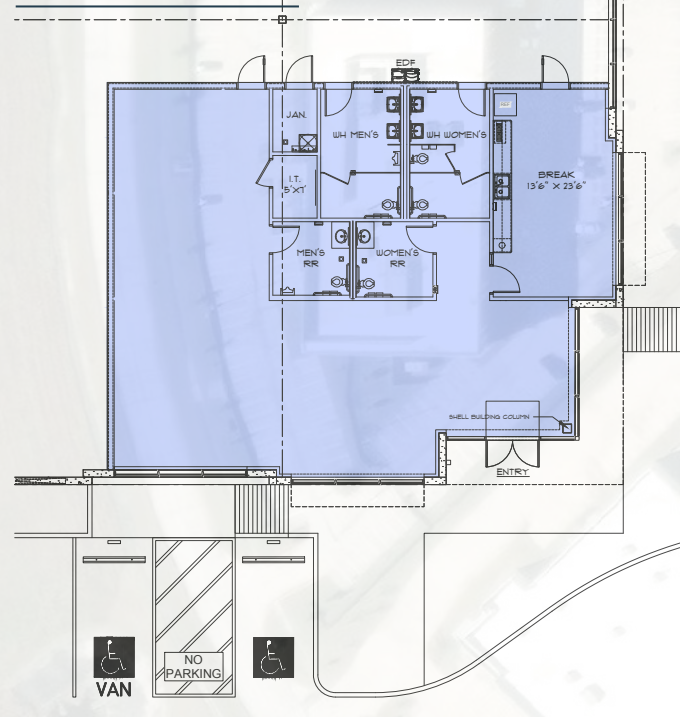
PROJECT HIGHLIGHTS

- ▶ +/- 96,846 SF Available | Divisible to +/-42,217 SF
- ▶ Beltway Frontage South of the Ship Channel
- ▶ Within Master Planned Business Park
- ▶ Convenient to Houston's Container Terminals
- ▶ Direct Access Beltway 8 and Highway 225





SPEC OFFICE



SPACE DETAILS

- ▶ Space Size: +/- 96,846 SF
- ▶ Divisible To: +/- 42,217 SF
- ▶ Spec Office: 2,376 SF
- ▶ Building Depth: 270'
- ▶ Configuration: Rear Load
- ▶ Truck Court: 135'
- ▶ Clear Height: 32'
- ▶ Dock Doors: 18 (9' x 10')
- ▶ Drive-In Doors: 1 (12' x 14')
- ▶ Column Spacing: 52' 6" x 52'
- ▶ Speed Bays: 60'
- ▶ Power: 2,500 Amps
- ▶ Interior/ Exterior Lighting: LED
- ▶ Sprinkler: ESFR



225 CROSSING

LOGISTICS CENTER

310 BELTWAY GREEN BLVD | PASADENA, TX



FOR ADDITIONAL INFORMATION, PLEASE CONTACT:

Joseph Smith
+1 832 723 1566
joseph.smith@cbre.com

Ed Frantz
+1 713 577 1778
ed.frantz@cbre.com

Savannah Smith
+1 713 577 1851
savannah.smith@cbre.com

© 2023 CBRE, Inc. All rights reserved. This information has been obtained from sources believed reliable but has not been verified for accuracy or completeness. CBRE, Inc. makes no guarantee, representation or warranty and accepts no responsibility or liability as to the accuracy, completeness, or reliability of the information contained herein. You should conduct a careful, independent investigation of the property and verify all information. Any reliance on this information is solely at your own risk.

